

North Yorkshire

Personal Details:

Name: Miss Jo Foster

Email: [REDACTED]

Postcode: [REDACTED]

Organisation Name: Richmond & Northallerton Liberal Democrats (Political groups)

Comment text:

Related subject: Richmond, North Richmondshire & adjoining villages

Please find attached a statement of support for the proposal put forward by Cllr. Philip Broadbank with regards the division of Richmond and North Richmondshire. The statement also explains our concerns with the way this part of North Yorkshire has been divided in the proposal put forward by North Yorkshire Council.

Attached Documents:

- north-yorkshire-boundary-review---statement-of-support.docx



Re: North Yorkshire Boundary Review

Statement of Support from Richmond & Northallerton Liberal Democrats for proposal submitted by Cllr. Philip Broadbank

5th December 2024

Dear Sir or Madam

The Richmond & Northallerton constituency branch of the Liberal Democrats wish to provide a Statement of Support for the North Yorkshire boundary proposal submitted by Cllr. Philip Broadbank.

As a member of the working group charged with shaping North Yorkshire Council's boundary submission, Cllr. Broadbank approached our team to get a local perspective on the community connections across our constituency. We were, of course, delighted to help.

While the proposal submitted by North Yorkshire Council is a solid piece of work, we believe the way they have chosen to divide Richmond and its neighbouring communities requires an urgent rethink. Cllr. Broadbank shares our concern and so has submitted an alternative proposal of his own for all 89 divisions across the county. His version includes what we believe to be a much more logical way of dividing up the Richmond area. We believe Cllr. Broadbank's solution better serves residents as it respects existing community connections and use of amenities and uses existing boundaries such as rivers and key roads and natural boundaries. Therefore, we are keen for this Statement of Support to be considered as part of his submission.

Below is an outline of the differences each of these options presents, plus our reasons for preferring Option B, Cllr. Broadbank's submission.

We would appreciate your time in considering our point of view and are happy to provide more details and examples as required.

Yours faithfully

Clive World

Cllr. Clive World
(Incoming Chair of Richmond & Northallerton Lib Dems
and Richmond Town Councillor)

PLAN A: North Yorkshire Council Submission

This option would lead to Richmond and the surrounding villages being divided is as follows:

Richmond & Gilling West Division: 6023 voters

Richmond North Ward (1856), Richmond West Ward 1 (1687), Richmond West Ward 2 (1699), Aske, Gilling with Hartforth & Sedbury, St Martins

Richmond East & Scotch Corner Division: 5979 voters

Richmond East Ward (1463), Easby, Brompton on Swale, Brough with St Giles, Skeeby, Bolton on Swale, Middleton Tyas, Ellerton on Swale, Scorton, Uckerby, Moulton

North Richmondshire:

Newsham (296), Dalton (162), Gayles (116), Ravensworth (215), Kirby Hill (50), Whashton (116), Melsonby (656), Caldwell (125), Carkin (44), East and West Layton (116), Eppleby (234), Forcett (78), Stanwick St John (115), Aldborough St John (359), Cliffe (25), Manfield (232), Barton (704), Newton Morrell (36), Croft on Tees (370), Dalton on Tees (214), Eryholme (57), North Cowton (434), East Cowton (559), South Cowton (86), Birkby (29), Cleasby (136) and Stapleton (165)

OUR OBJECTIONS

- **SCHOOL DISCONNECT**

Richmond & Gilling West would contain over 75% of Richmond residents, yet four of the town's five schools (all located on Darlington Road) would no longer be inside that division. Instead, Richmond's four major schools would be located in Richmond East & Scotch Corner (a division where Richmond residents would be in the minority). The new 'nearest school only' home-to-school transport policy means most families in the villages of Scorton, Brompton on Swale, Brough St Giles, Bolton on Swale, Ellerton on Swale, Uckerby would not qualify for free school transport to any of the Richmond schools. For some, Richmond is not in even their catchment school (eg. Brough St Giles families are required to attend Risedale School in Colburn).

- **EMPLOYMENT & ESSENTIAL SERVICES**

Residents of several villages that have been grouped together to form East Richmond & Scotch Corner division do not consider Richmond as their main centre for key activities such as work, leisure, shopping and services. For example, residents of Brough St Giles have much closer ties to Catterick Garrison than to shop, go to the gym and cinema etc in Hipswell and attend the doctors and pharmacy and dentists in Colburn or Catterick Village. As the villages are all within easy access to the motorway residents are more likely to travel north or south on the A1 for work rather than travelling to and from Richmond for work.

- **CUMBERSOME GEOGRAPHY**

The shape of North Richmondshire would continue to make it cumbersome to administer. This geographically awkward division requires the councillor to cover a total of 28 parishes strung out in a long, thin line stretching over 20 miles from end to end. As well as having to navigate the A66, the eastern most villages are physically separated from the rest by the A1M.

PLAN B: OUR PREFERED OPTION: Cllr Broadbank's Submission

Richmond (5911)

Transfer approx. 1000 electors from the North ward in Richmond town to a revised North Richmondshire ward. The parish of St Martins (207 voters) is also transferred from the existing Hipswell and Colburn division. The rest of Richmond town makes up this revised Richmond ward

North Richmondshire (5598)

To include approx. 1000 voters from the existing North ward in the Richmond town division plus the parishes of Newsham (296), Dalton (162), Gayles (116), Ravensworth (215), Kirby Hill (50), Whashton (116), Aske (85), Gilling West (490), Melsonby (656), Caldwell (125), Carkin (44), East and West Layton (116), Eppleby (234), Forcett (78), Stanwick St John (115), Aldborough St John (359), Cliffe (25), Manfield (232), Barton (704), Skeeby (344) and Newton Morrell (36)

Swale and Tees (new name) (6222)

To include the parishes of Croft on Tees (370), Dalton on Tees (214), Eryholme (57), Middleton Tyas (540), Moulton (141), North Cowton (434), Brough St Giles (875), Easby (114), Brompton on Swale (1496), Uckerby (58), Scorton (793), Bolton on Swale (50), Ellerton on Swale (105), East Cowton (559), South Cowton (86), Birkby (29), Cleasby (136) and Stapleton (165)

WHY THIS WORKS:

- **SHARED AMENITIES**

All schools, shops and essential services remain in the ward where most Richmond residents live and work (Richmond Division).

- **BETTER CONNECTED**

Villages to at the western end of North Richmondshire have a natural affinity and connection to Richmond. Most families will send their children to school there and main location for shops, services and jobs.

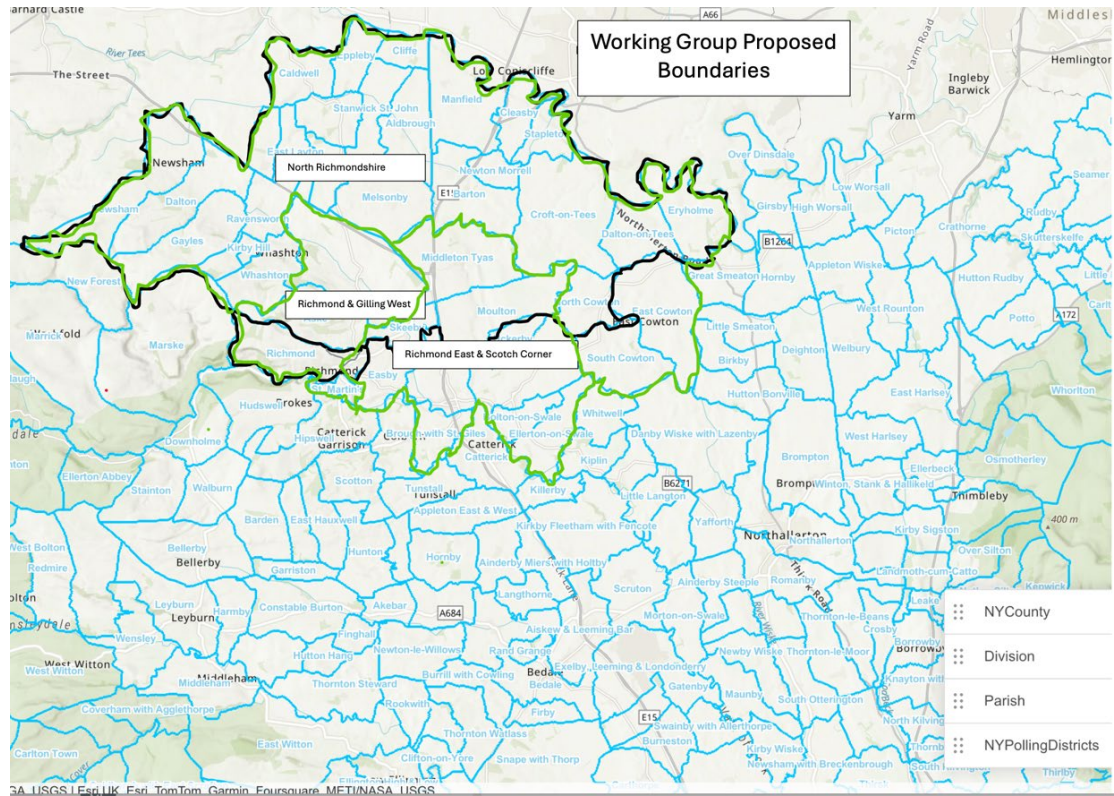
- **GEOGRAPHICAL MANAGABLE CLUSTER**

Uses the A1(M) as a physical boundary to segment North Richmondshire, turning it from a large thin stretch to a more circular cluster of villages/section of Richmond that are within easy reach of one another and have a greater tendency to share amenities.

- **UNITED BY ROAD AND RIVER**

The new Swale and Tees division uses the geographic landmarks of our key road and two major local rivers as unifying features. Most of the villages are situated close to the A1(M) and as a result share some common issues (eg. solar farms, service stations, industrial units, road safety) and opportunities (housebuilding, good transport links, ability to attract commercial investment).

PLAN A



PLAN B

